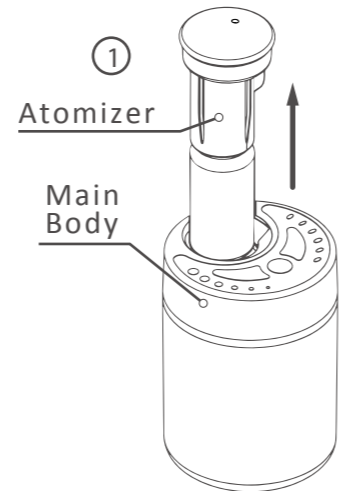




Aroma-Express™

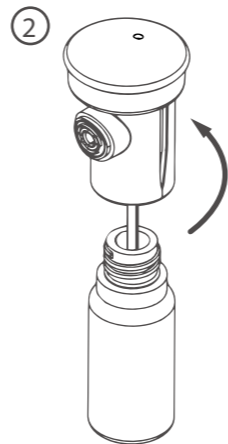
User Manual

Getting Started

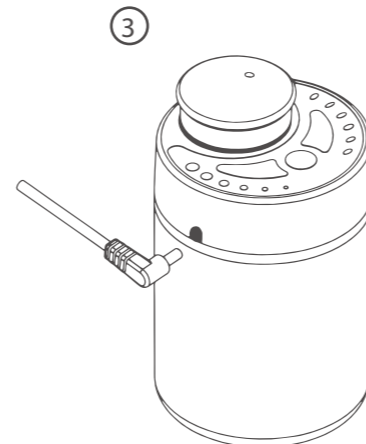


Lift the atomizer from the main body

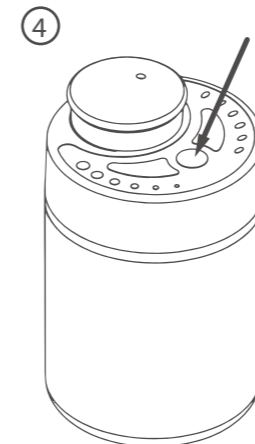
*Always keep diffuser in upright position to keep oil contained



Remove empty bottle and screw on essential oil of your choice

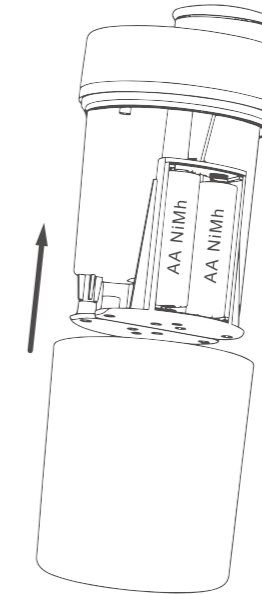


Plug in the power cord to use the Aroma-Express and charge batteries



Press the "⏻" to power on

Batteries



The Aroma-Express comes with 4 AA NiMh Rechargeable batteries.

By plugging in diffuser, the batteries recharge.

To access the batteries, lift unit up out of the container.

Cleaning Instructions

- 1. Pull up the atomizer from the main body
2. Unscrew oil bottle from the atomizer
3. Pour a little rubbing alcohol in an empty essential oil bottle
4. Screw atomizer onto the oil bottle
5. Slide atomizer into the main body
6. Diffuse alcohol on continuous setting for one minute in a well ventilated area
7. Remove the bottle of alcohol, re-attach your favorite essential oil, and enjoy

Warranty, Returns and Disclaimer

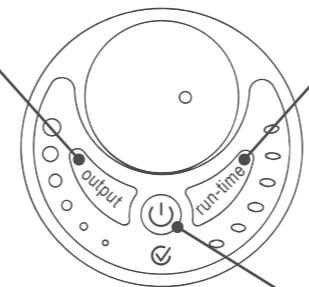
Warranty: We make every effort to insure that our products meet high quality standards and warrants to the original purchaser that this product is free from defects in materials and workmanship for the period of one year from date of purchase.
Returns: Please call and obtain a return materials authorization number (RMA) before returning your diffuser.
Disclaimer: This product has not been evaluated by the US Food and Drug Administration.

Operating Instructions

Output

The Output button controls how much oil is diffused. For example, at the lowest setting (Level 1), the unit diffuses oil for 6 seconds and rests for 4 minutes. Increasing the Output to Level 4, the unit diffuses oil for 6 seconds and rests for 30 seconds. At Level 6, the unit diffuses oil for 6 seconds and rests for 2 seconds. Pressing the button one more time to Level 7 will activate all of the six lights and the diffuser will run continuously.

NOTE: Unlike ultrasonic diffusers, atomizing diffusers do not need to run continuously to be effective (See our website for more information).



Run-Time

The Run-Time button is simply a timer. Pressing the button once (Level 1) sets the timer to 30 minutes. Each time you press the button, 30 minutes are added to the timer up to 180 minutes at Level 5. At level 6, the diffuser will run continuously.

Power

- Press the button once to turn the unit ON
• Press the power button again to turn the unit OFF
• A SOLID BLUE light indicates that the unit has adequate power
• When the light BLINKS RED, please charge the batteries

MEMORY FEATURE: As long as the unit has adequate power, it will remember how you configured the controls. When you turn the unit on, it will default to those settings.

Safety Instructions

- Do not set on surfaces that can be damaged by essential oils
• Remove essential oil bottle before transporting
• Always keep in upright position to prevent oil from entering pump. This may void warranty
• For indoor use only. Do not use around water
• Use NiMh batteries ONLY
• Keep out of reach of children and pets

Specifications

Size: 2.8" diam. x 4.7" high
Weight: 1 lb
Input Required: 5V ~ 1A

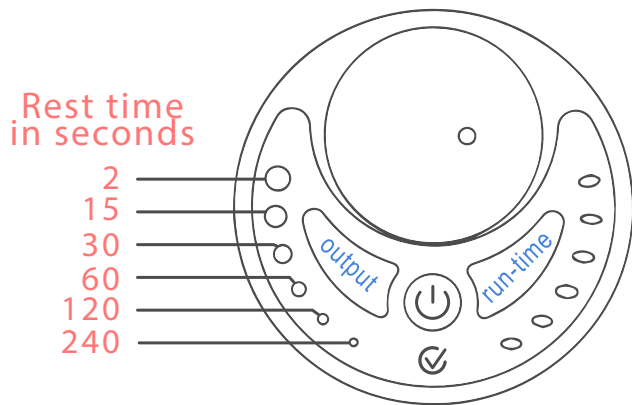
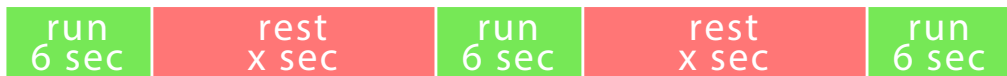
Accessories: Batteries NiMh (only), USB Cable, Atomizer, Wall Plug Adapter
Replacements available at www.diffuserworld.com

Diffuser World, Inc. 1-855-276-6277 www.diffuserworld.com

©2016 v.1

How Does it Work?

The Aroma-Express will run for 6 second intervals. Pressing the **output** button will adjust the **rest-time** between intervals. When all output lights are on, the Aroma-Express will **run** continuously.



The run-time button sets the time the Aroma-Express will run before shutting off automatically. This is displayed with numbers in minutes.

The Power Button:

- Solid Blue Light** = Batteries High
 - Blinking Red Light** = Batteries Low
 - Solid Red Light** = Batteries Charging
- Light turns off when charge is complete